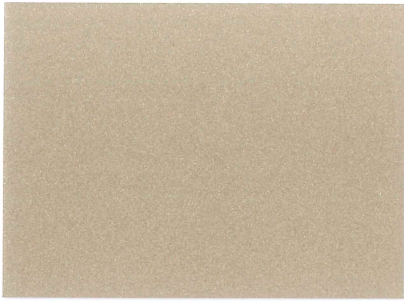


KEMI ART

MATT METALLICS
waterbased effects
KMA300



KEMICHAL®



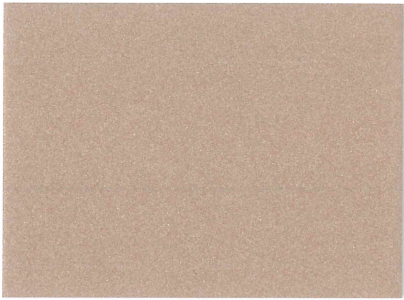
KMA301



KMA302



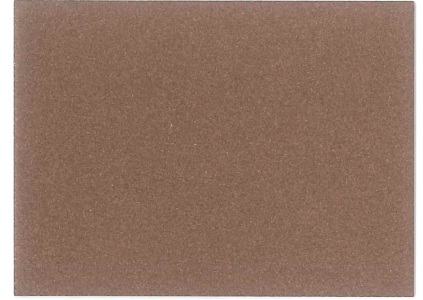
KMA303



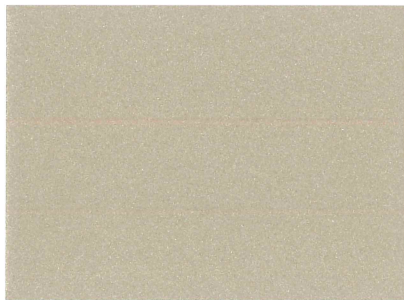
KMA304



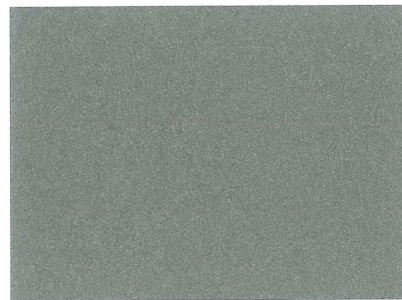
KMA305



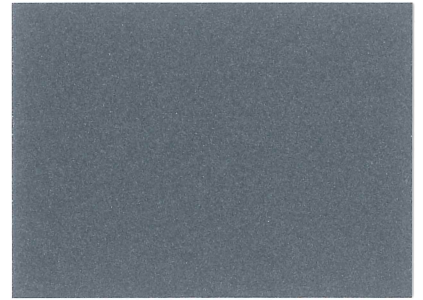
KMA306



KMA307



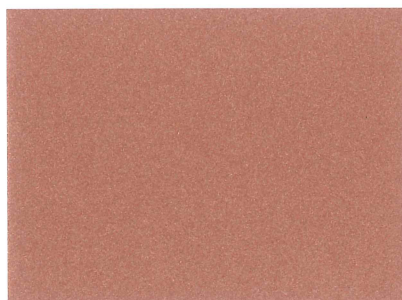
KMA308



KMA309



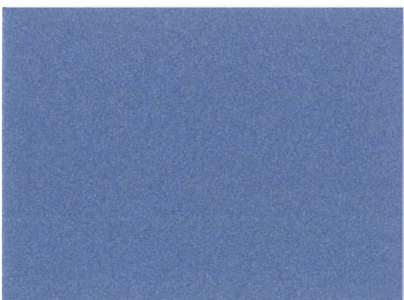
KMA310



KMA311



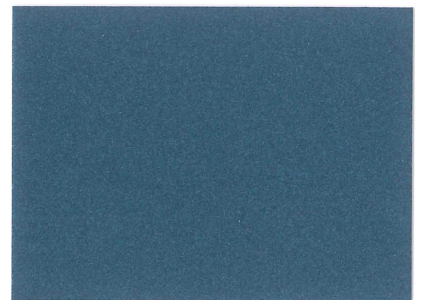
KMA312



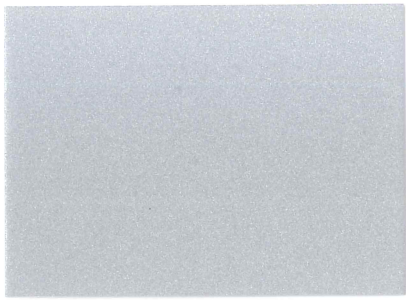
KMA313



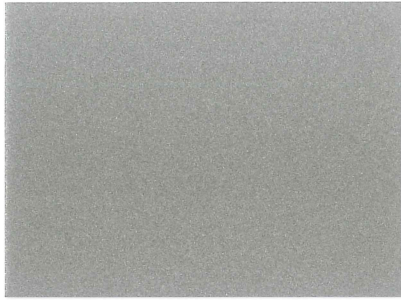
KMA314



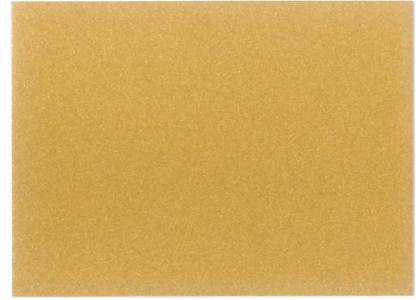
KMA315



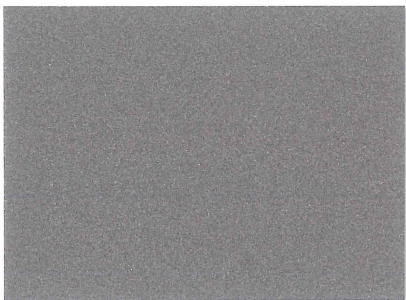
KMA300



KMA317



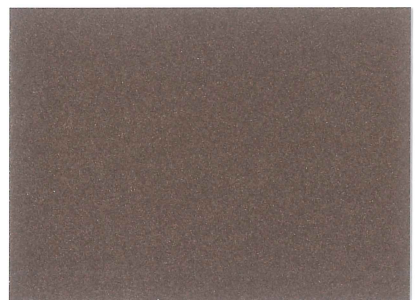
KMA318



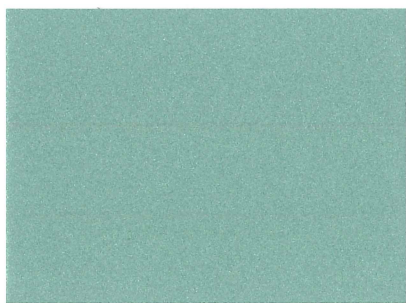
KMA319



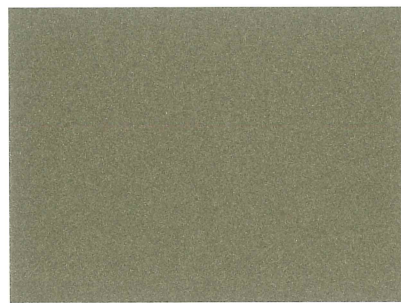
KMA320



KMA321



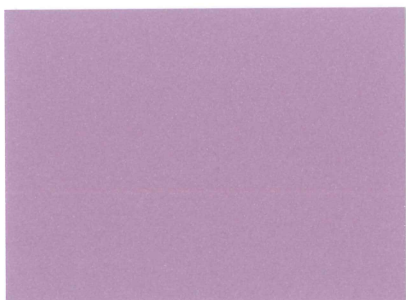
KMA322



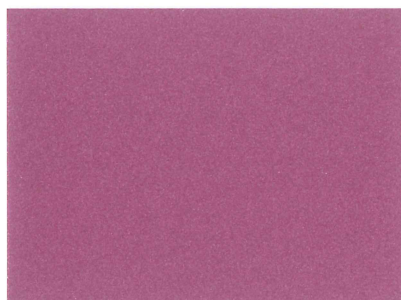
KMA323



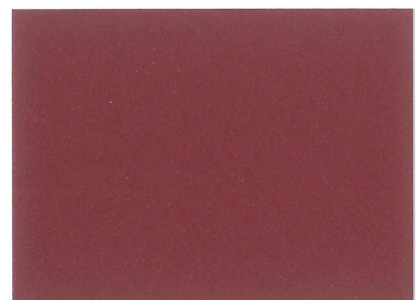
KMA324



KMA325



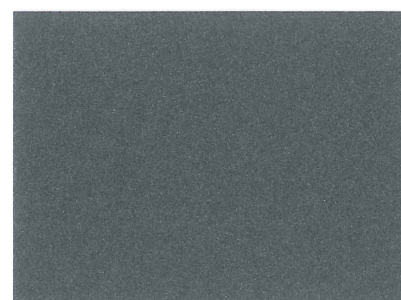
KMA326



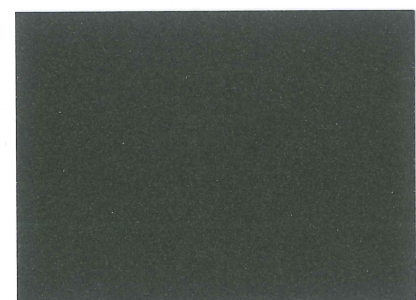
KMA327



KMA328



KMA329




KMA330

Purely indicative colors. Preliminary tests should be always carried out in order to obtain the best results.



VERNICI E COLORI

Via dell'Artigianato, 2 - TREBASELEGHE (PD) - Italy
Tel. +39 049 9385648 - Fax +39 049 9385070
www.kemichal.it  info@kemichal.it



SISTEMA DI GESTIONE
QUALITÀ CERTIFICATO

CQY
CERTIQUALITY

UNI EN ISO 9001:2015

www.kemichal.it